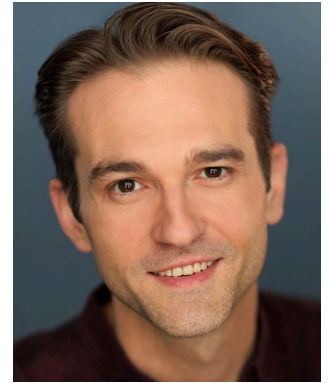


# Zach Sorrow

5'9" / SAG-AFTRA

Adam Mendlesohn, Narrow Road

[adam@narrowroad.co.uk](mailto:adam@narrowroad.co.uk)



## TELEVISION

Chicago Med ( <i>S08E14</i> )	Co-Star	NBC	dir. Nicole Rubio
As the World Turns ( <i>E13190</i> )	Co-Star	CBS	dir. Michael Eilbaum
Law & Order: SVU ( <i>S06E15</i> )	Co-Star	NBC	dir. Jean de Segonzac

## THEATRE

The Who's TOMMY	Ensemble / Swing	Goodman Theatre	dir. Des McAnuff
Million Dollar Quartet	u/s Carl, u/s Elvis	Paramount	dir. Jim Corti/Creg Sclavi
Fiddler on the Roof	Perchik	Drury Lane	dir. Elizabeth Margolius
SKATES: A New Musical	Brad, u/s Scotty	Studebaker Theater	dir. Brenda Didier
Groundhog Day: The Musical	Swing	Paramount	dir. Jim Corti
Million Dollar Quartet	Elvis	Theatre at the Center	dir. Daryl Brooks
The Sound of Music	Rolf	Lyric Opera of Chicago	dir. Marc Bruni
Heartbreak Hotel	u/s Elvis	Broadway Playhouse	dir. Floyd Mutrux
The Fortunate Sons (CCR Tribute)	John Fogerty	Fortunate Sons Ent.	Jeff Phillippe (mgr)
Big River	Ensemble	Theatre at the Center	dir. Linda Fortunato
The Addams Family	Lucas	New Theatre KC	dir. Richard Carrothers
Grease	Doody	Royal Caribbean	dir. Tony Edge
Aladdin: A Musical Spectacular	Aladdin	Disney Cruise Lines	dir. Sally Bayes
FOUND: A New Musical	Ensemble	NY Stage & Film	dir. Lee Overtree
The Who's TOMMY	Ensemble	Berkshire Theatre Group	dir. Eric Hill
Finian's Rainbow	Ensemble	Berkshire Theatre Group	dir. Kyle Sable

## TRAINING

**Northwestern University** - BA Theatre, MT Certificate

**British American Drama Academy** - *Midsummer in Oxford*

**Berkshire Theatre Group** - *Acting Apprenticeship*

**Second City Chicago** - *Improv for Actors*

## SKILLS

- |   |                              |  |
|---|------------------------------|--|
| - Rock Tenor ( <i>to B4, falsetto to G5</i> ) | - Swimming ( <i>strong</i> ) | - Dialects                             |
| - Legit Baritone ( <i>to A4, down to D2</i> ) | - Cycling ( <i>strong</i> )  | - Standard American ( <i>Native</i> )  |
| - Guitar: Acoustic/Electric ( <i>expert</i> ) | - Emceeing / Hosting         | - Southern American ( <i>Various</i> ) |
| - Electric Bass ( <i>intermediate</i> )       | - Improvisation              | - Scottish ( <i>Glasgow</i> )          |
| - "Face Puppetry"                             | - Musical Improv             | - Irish ( <i>Dublin</i> )              |
| - Beatboxer ( <i>expert</i> )                 | - Trained Barista            | - English ( <i>RP, Cockney</i> )       |